
ECAM22X.2Y - 22X.3Y

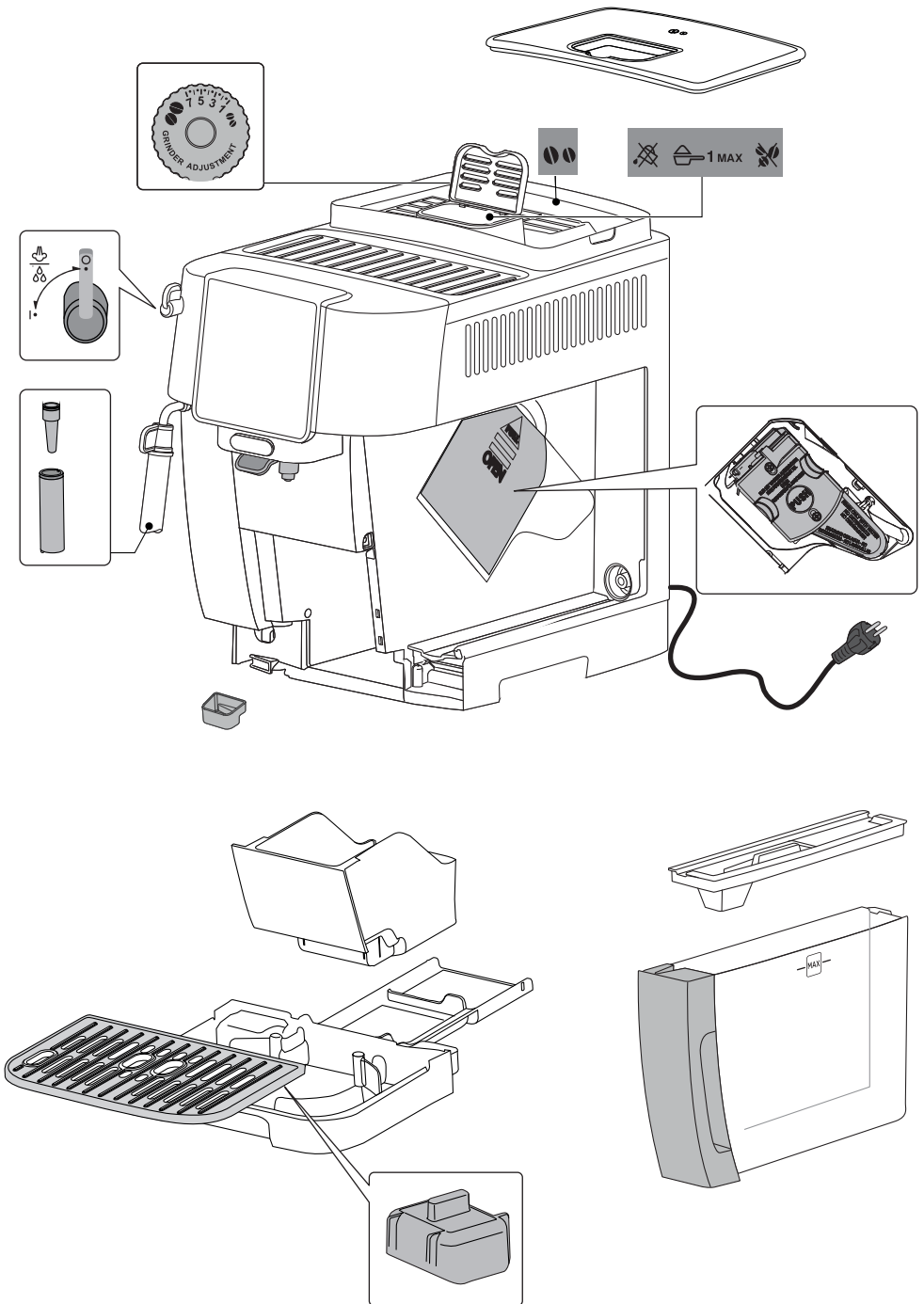
MAGNIFICA START

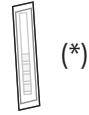
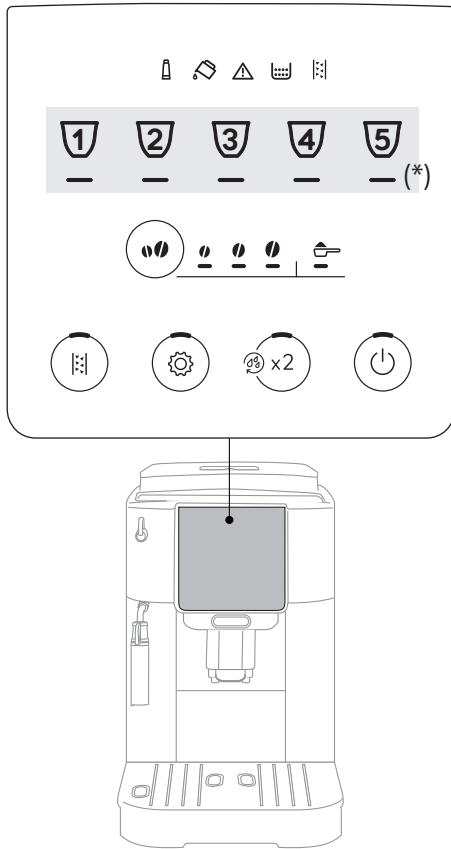
QUICK GUIDE



DeLonghi

RO- Înainte de a utiliza aparatul, citiți întotdeauna broșura cu avertismente de siguranță. Pentru informații suplimentare cu privire la funcționare, consultați informațiile suplimentare din broșura „Instrucțiuni de utilizare”





(*)

- IT Bevande e accessori diversi per tipo e numero a seconda del modello.
- EN The type and number of beverages and accessories differ according to model.
- DE Die Art und Anzahl der Getränke und Zubehörteile kann je nach Modell abweichen.
- FR Le type et le nombre de boissons et d'accessoires différent suivant le modèle.
- NL Het type en aantal van de dranken en de accessoires kunnen afhangen van het model verschillen.
- ES Bebidas y accesorios diversos por tipo y número según el modelo.
- PT Bebidas e acessórios diferentes por tipo e número consoante o modelo.
- EL Ο τύπος και ο αριθμός των ροφημάτων και των αξεσουάρ διαφέρουν αναλόγως το μοντέλο.
- NO Type og nummer for hver enkelt drikk avhenger av modell.
- SV Drycker och tillbehör är olika i typ och antal, beroende på modellen.
- DA Drikke og andet tilbehør efter type og nummer afhængigt af model.

- FI Valittavissa olevien juomien ja lisävarusteiden tyyppi ja lukumäärä ovat mallikohtaisia.
- RU Напитки и аксессуары отличаются по типу и количеству в зависимости от модели.
- UK Тип та кількість напоїв та аксесуарів відрізняються залежно від моделі.
- KZ Суусындар мен керек-жарақтардың түрлері мен саны әр модельде әртүрлі болады.
- HU Típus és szám szerint eltérő italok és tartozékok a modell alapján.
- CS Nápoje a různá příslušenství podle typu a čísla v závislosti na modelu.
- SK Rôzne nápoje a príslušenstvo podľa typu a čísla podľa modelu.
- PL Napoje i akcesoria różnego rodzaju i ilości, w zależności od modelu.
- HR Napitci i dodaci se razlikuju prema vrsti i broju, ovisno o modelu.
- SL Drugačen tip in število napitkov in pripomočkov glede na model.
- SR Pića i različiti pribor za vrstu i broj u skladu s modelom.
- BG Напитки и аксесоари, различни по вид и брой, според модела.
- RO Băuturi și accesorii diferite pentru tip și număr în funcție de model.
- TR İçecekler ve aksesuarların tür ve sayıları modele göre değişiklik gösterir.

مشروبات وملحقات تشغيلية مختلفة من حيث النوع والعدد وفقاً للموديل. AR
 نوع و تعداد نوشيدنی ها و لوازم جانبی با توجه به مدل دستگاه متفاوت هستند. FA



DeLonghi



Per completare correttamente il primo avvio, la manopola deve essere in pos. 0 • Make sure the steam knob

is on 0 pos. for the whole operation • Pour compléter correctement le premier démarrage, la manette doit

être positionnée sur 0 • Um die erste Inbetriebnahme korrekt zu beenden, muss der Drehknopf auf Pos. 0 stehen • Om

de eerste inwerkingstelling correct te voltooien, moet de knop geplaatst zijn op stand 0 • Para completar correctamente

la primera puesta en funcionamiento, el mando debe estar en la pos. 0 • Para realizar correctamente o primeiro arranque,

o manipulo deve estar na pos. 0 • Για να ολοκληρωθεί σωστά η αρχική εκκίνηση λειτουργίας, ο διακόπτης πρέπει να είναι

στη θέση 0 • For å fullføre første oppstart korrekt må bryteren være i pos. 0 • För att fullborda den första starten korrekt, ska vredet vara i läge. 0 •

For at gennemføre den første opstart korrekt skal knappen stå i pos. 0 • Jotta ensimmäinen käynnistys sujuisi oikeaoppisesti, nupin tulee olla

asepöissa 0 • Для правильного завершения первого запуска рукоятка должна быть в поз. 0 • Щоб правильно завершити налаштування

машини, кнопки пари повинна бути в положенні «0» • Машинаны дұрыс орнату үшін бу беру тұтқасы "0" күйінде болуы керек •

Az első indítás sikeres elvégzése érdekében a szabályozó gombnak 0 • Pro správné dokončení prvního spuštění musí být knoflík v pol. 0 • Pre

správne dokončenie prvého spustenia musí byť gombík v pol. 0 • Aby prawidłowo zakończyć pierwsze uruchomienie, pokrętło musi się znajdować

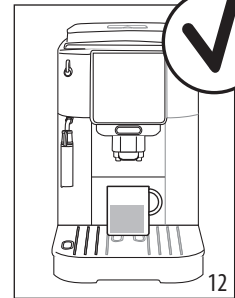
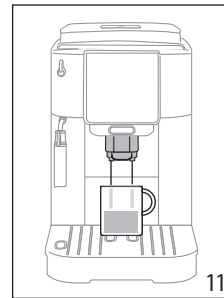
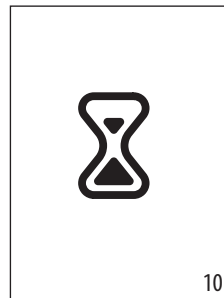
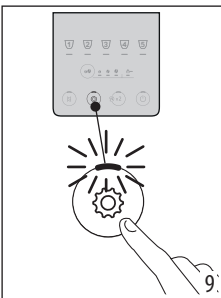
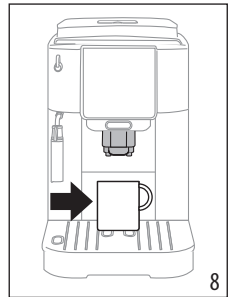
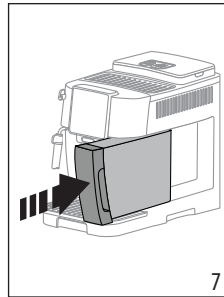
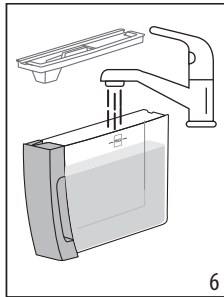
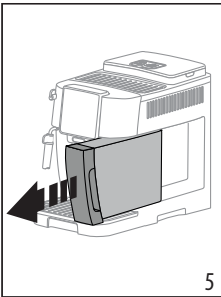
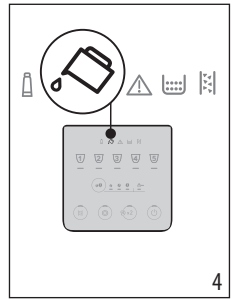
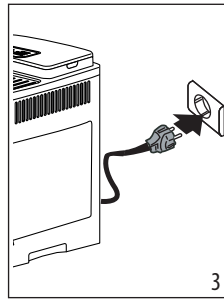
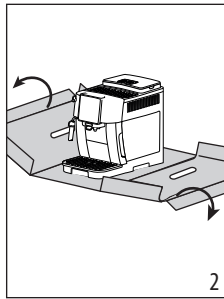
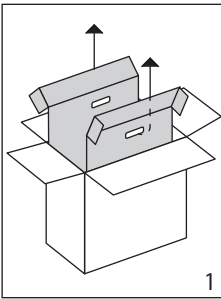
w poz. 0 • Za ispravno dovršenje prvog pokretanja, ručica mora biti u poz. 0 • Da bi pravilno zaključili prvi zagon, mora biti ručica na pol. 0 • Za

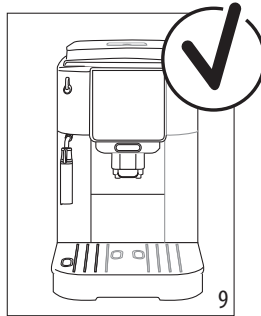
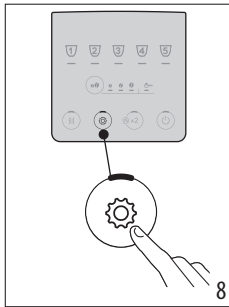
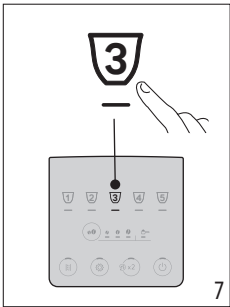
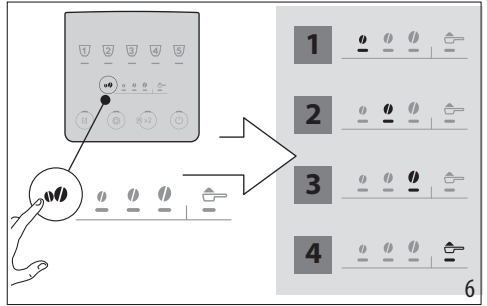
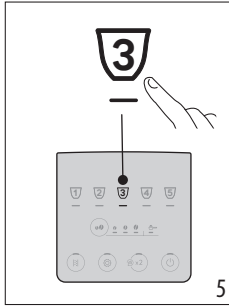
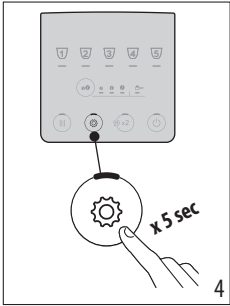
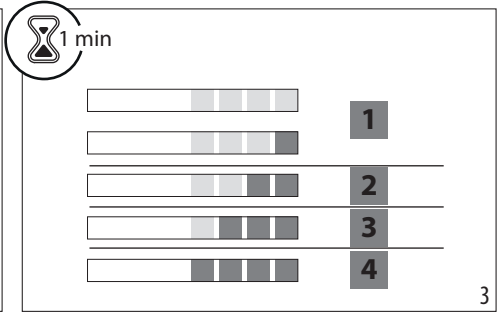
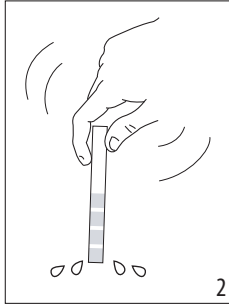
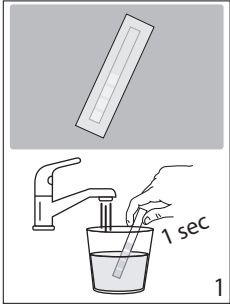
ispravno završetak prvog pokretanja, ručica mora da bude u pol. 0 • Asigurați-vă că butonul pentru abur este în poziția 0 • Переконайтеся, що

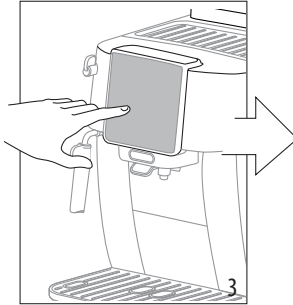
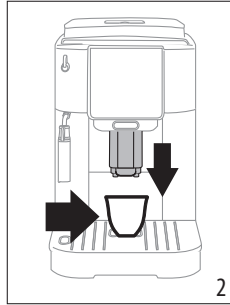
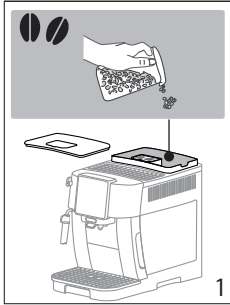
ручка подачі пари знаходиться в положенні 0 • Pentru a finaliza corect prima punere în funcțiune, butonul rotativ trebuie să fie pe poz. 0 • İlk

başlatmayı doğru şekilde tamamlamak için düğmenin 0 konumunda olması gerekir



لإتمام بدء التشغيل الأول بطريقة صحيحة، يجب أن يكون المقبض في الموضع 0 • برای تکمیل صحیح تنظیمات دستگاه، گردونه بخار باید در حالت «0» قرار داشته باشد.

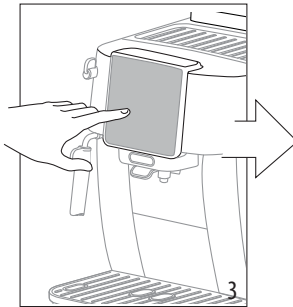
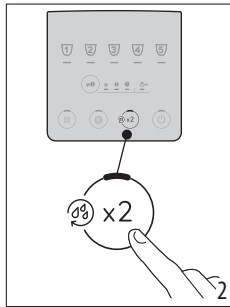
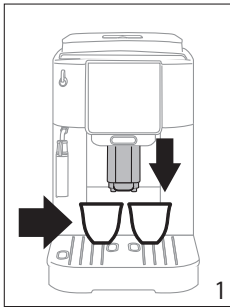
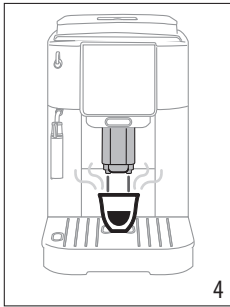




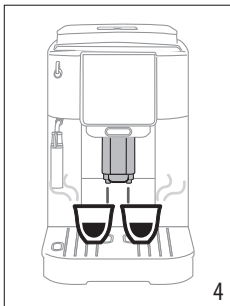


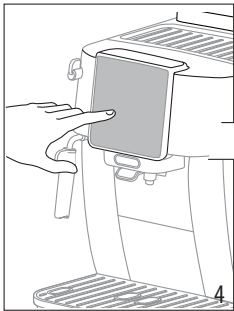
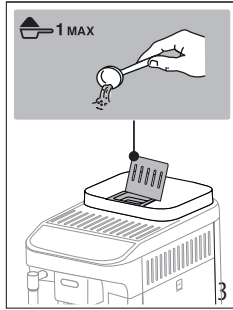
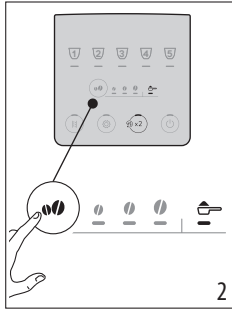
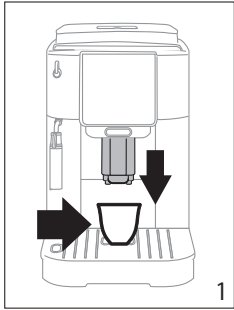
(*)

-  Espresso
-  Coffee
-  Long
-  Doppio+
-  Americano



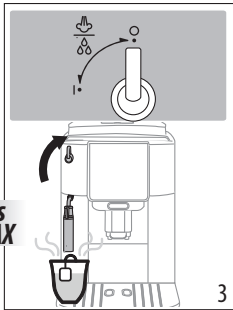
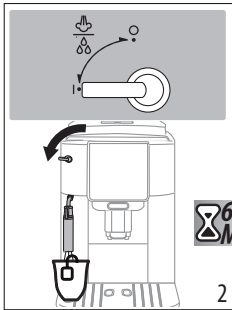
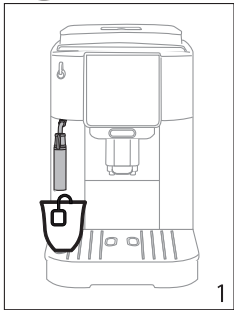
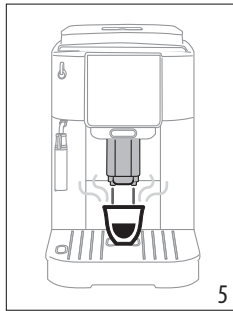
 Espresso

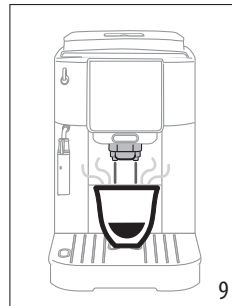
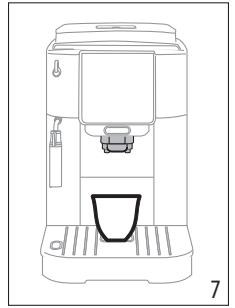
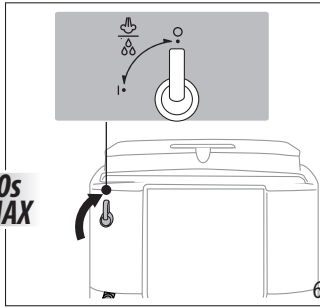
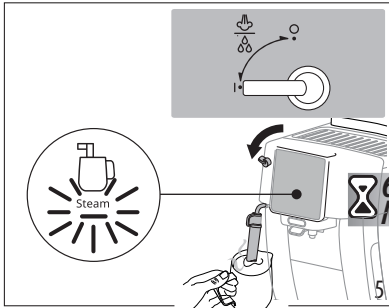
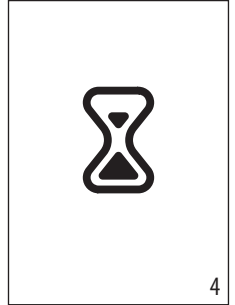
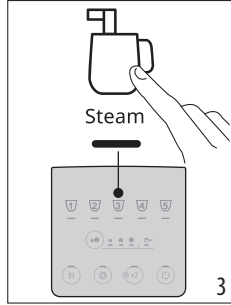
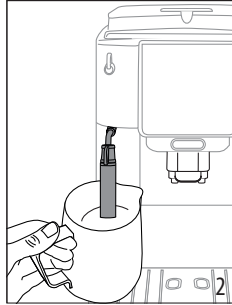
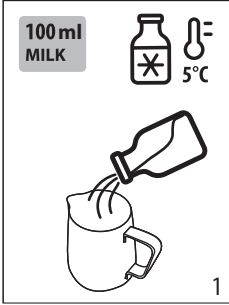




(*)

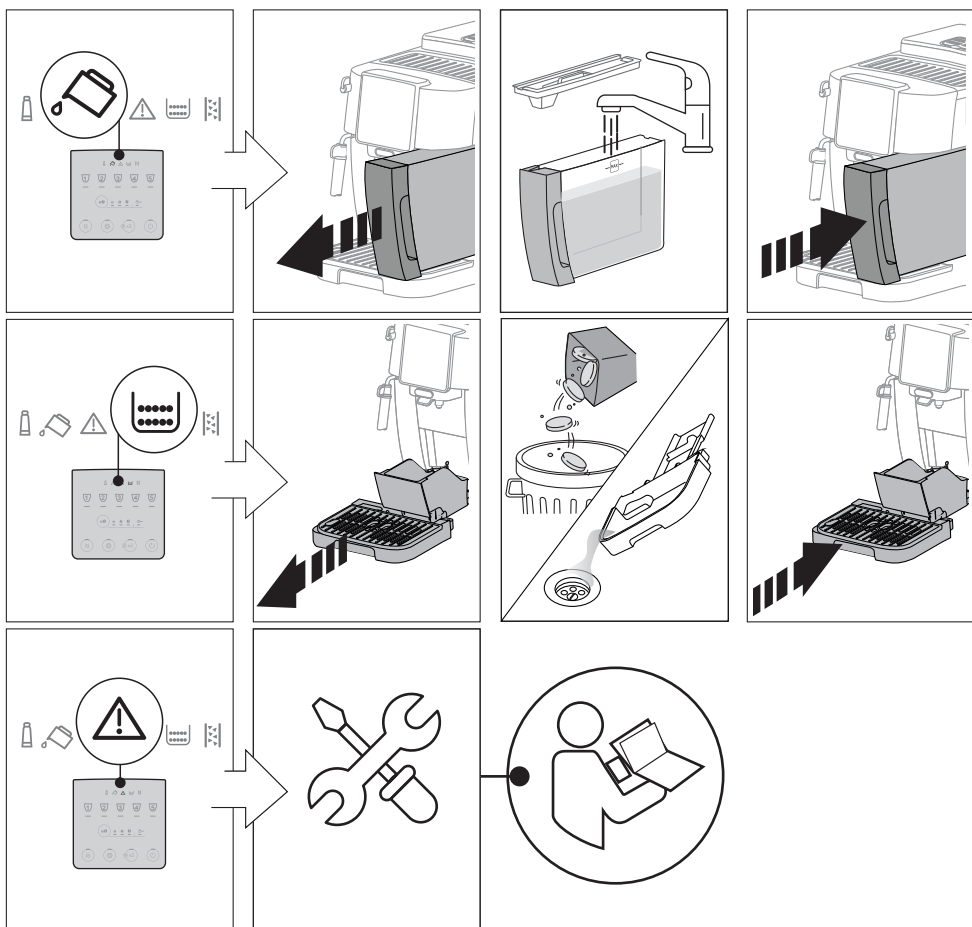
-  Espresso
-  Coffee
-  Long
-  Americano

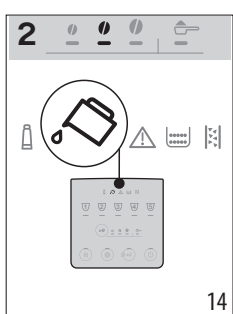
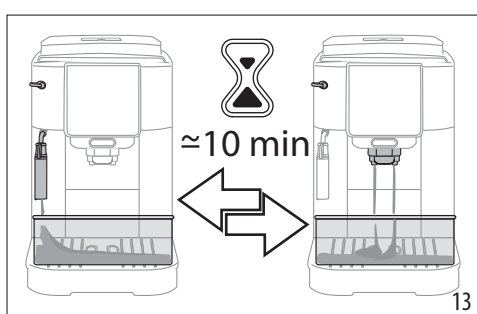
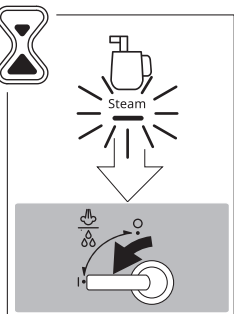
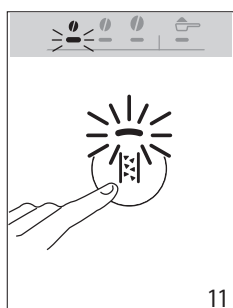
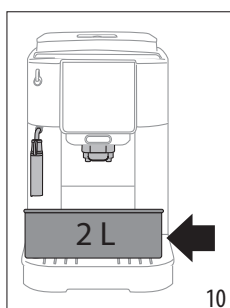
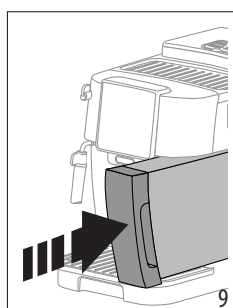
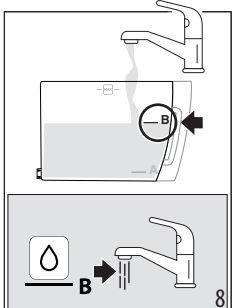
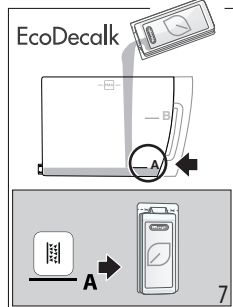
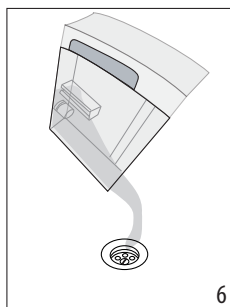
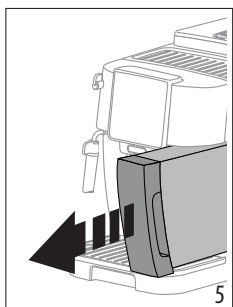
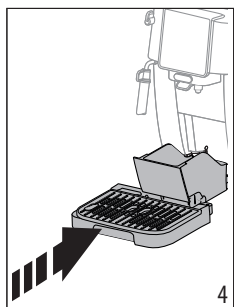
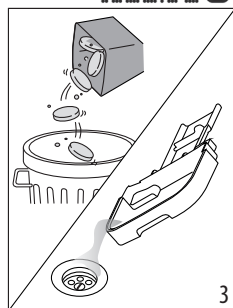
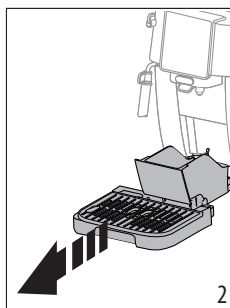
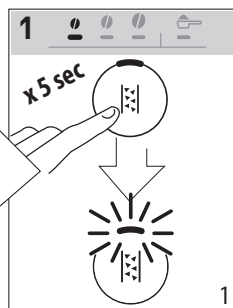
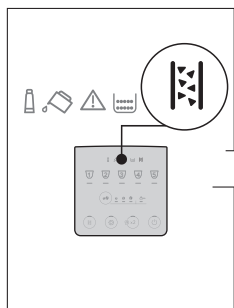


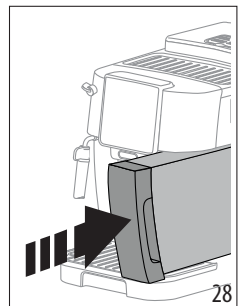
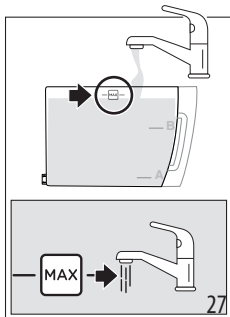
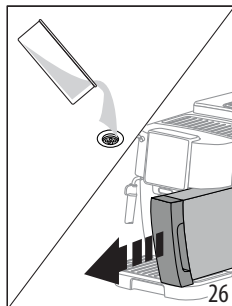
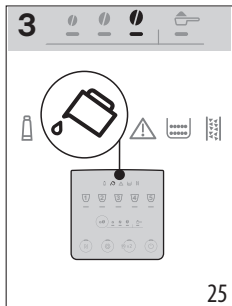
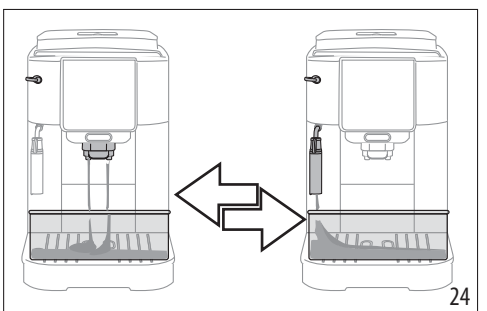
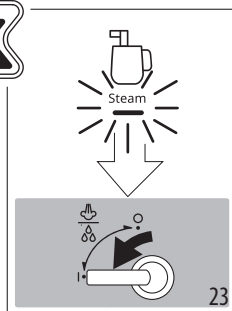
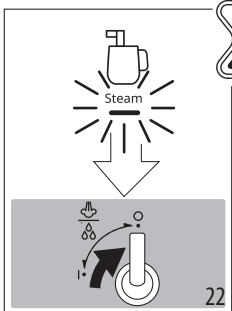
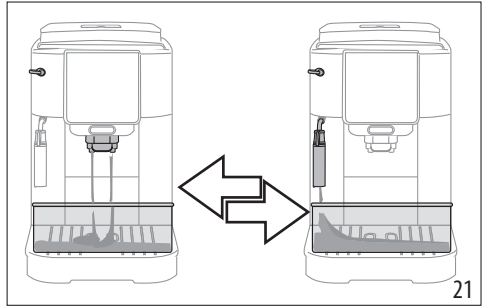
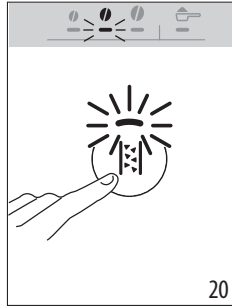
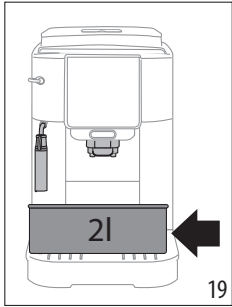
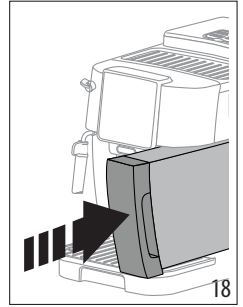
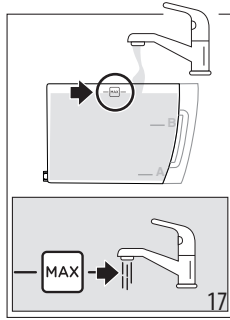
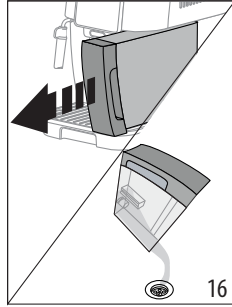
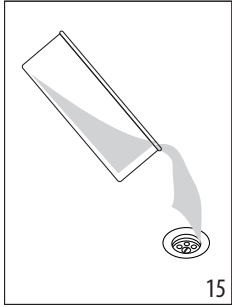


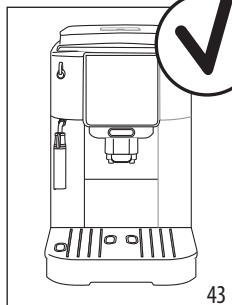
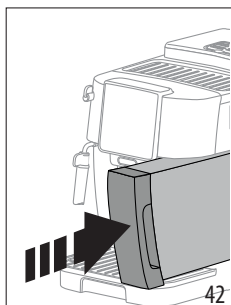
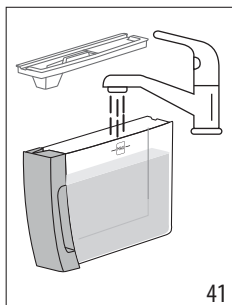
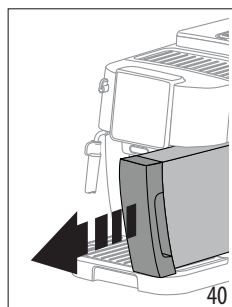
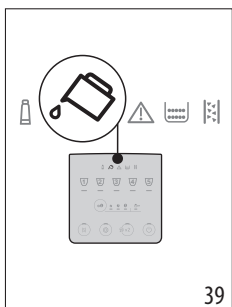
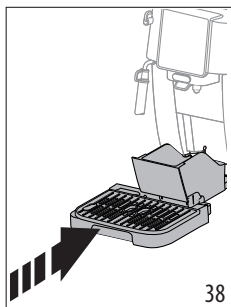
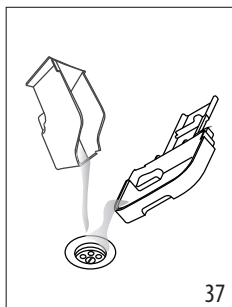
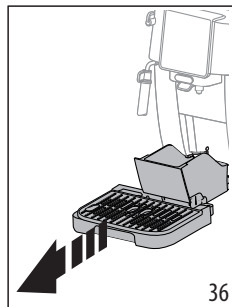
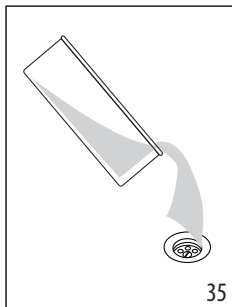
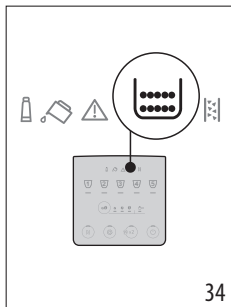
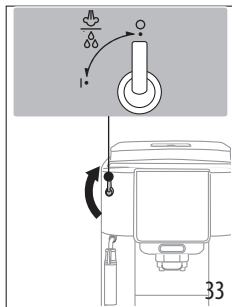
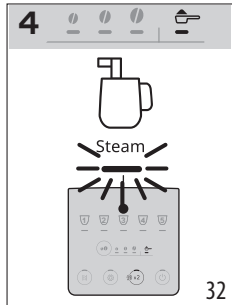
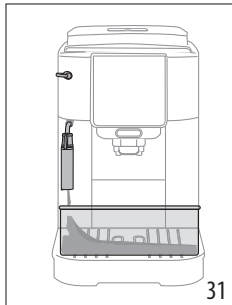
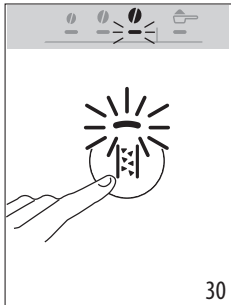
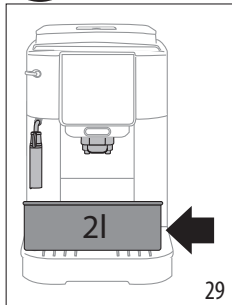


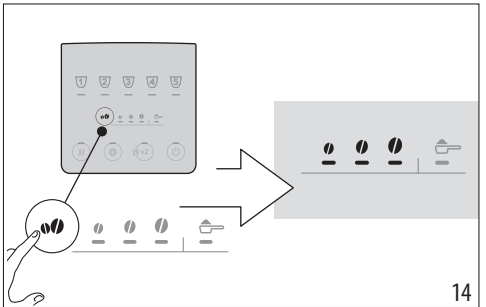
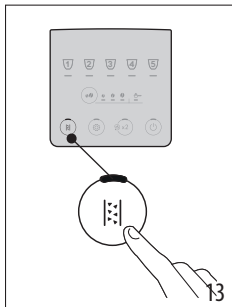
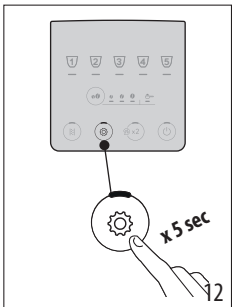
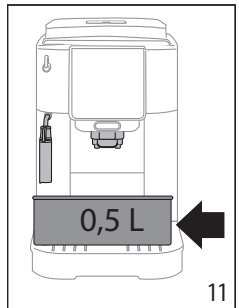
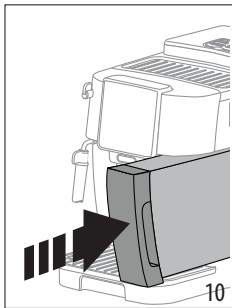
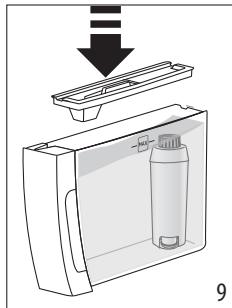
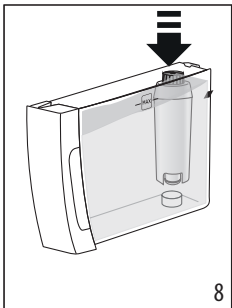
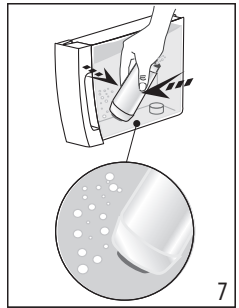
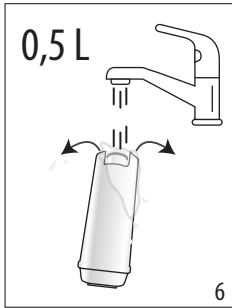
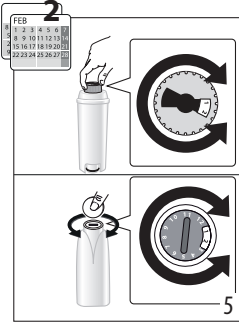
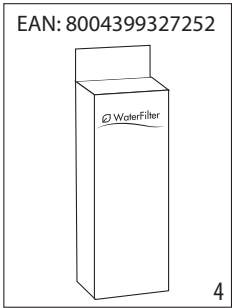
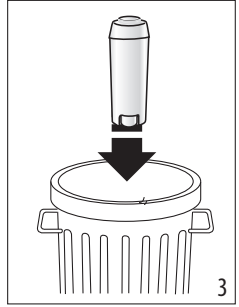
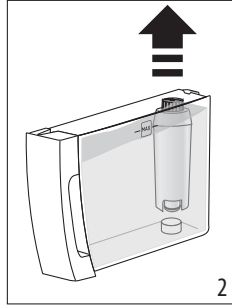
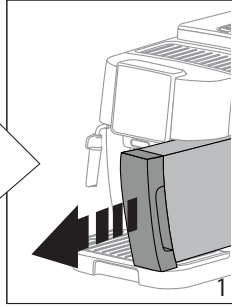
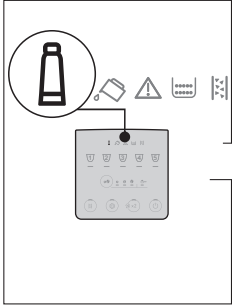
50°C	×	×	×	✓	✓
	✓	✓	✓	✓	✓

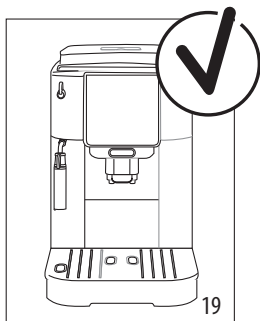
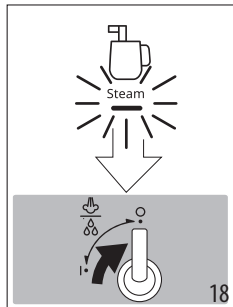
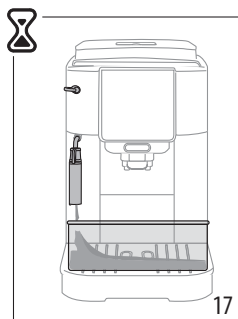
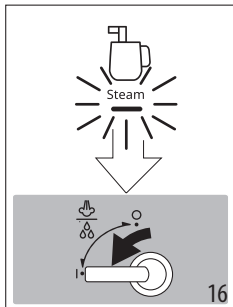
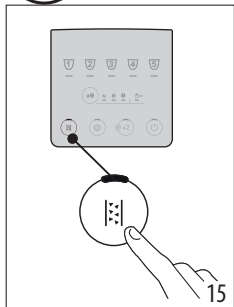




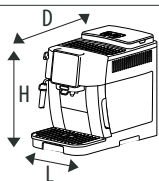








~ 220-240 V 50-60 Hz 1450 W



(LxDxH): 240 x 440 x 350 mm

8,8 Kg

 YouTube



More instructions available here



Register Now

www.delonghi.com/register



De'Longhi Appliances via Seitz, 47 31100 Treviso, Italy www.delonghi.com

57132C7931_01_0522