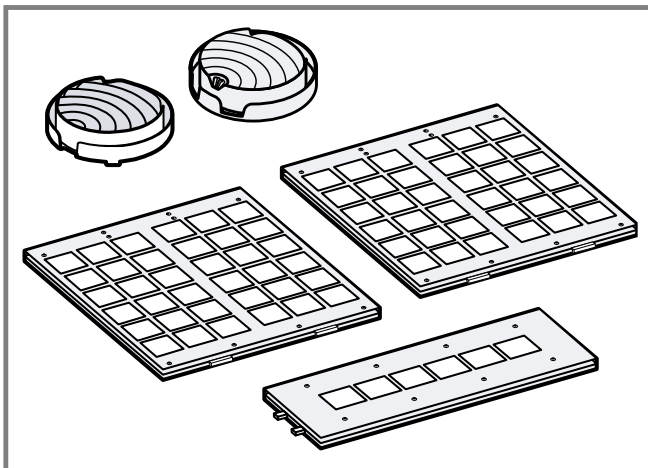
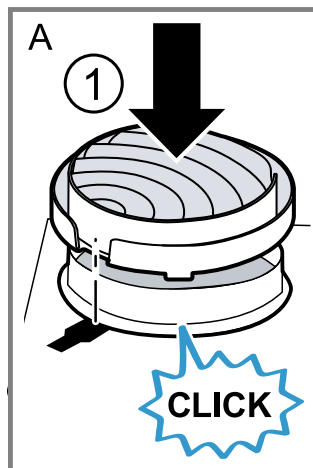




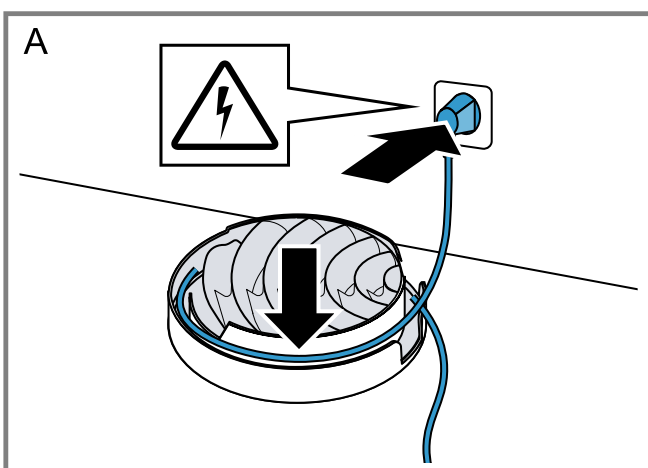
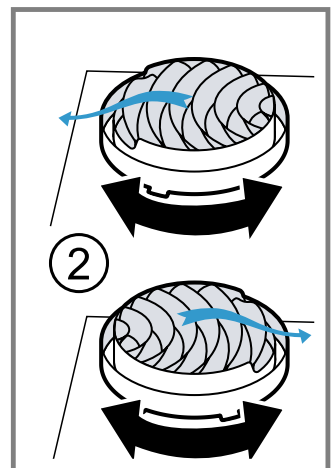
en Installation instructions



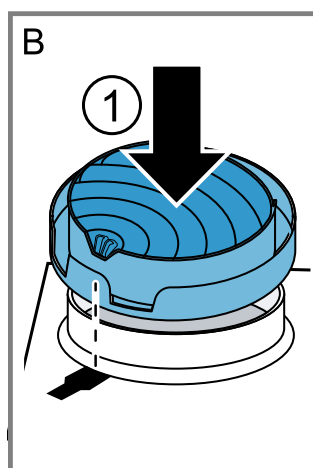
1



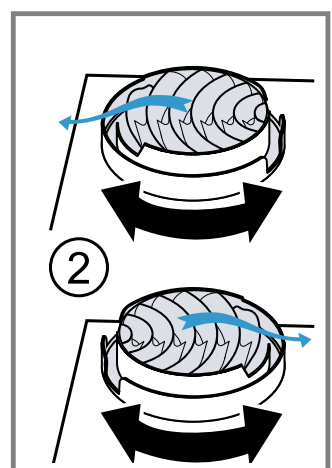
2

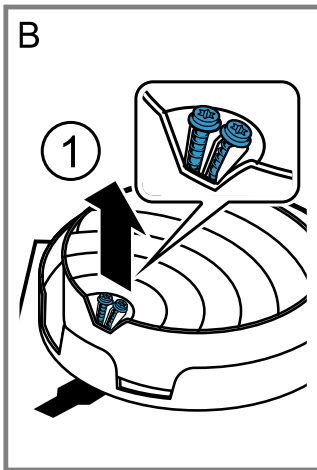


3

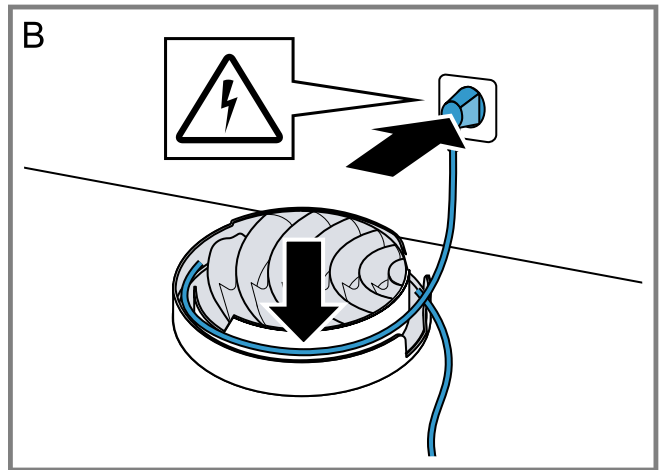
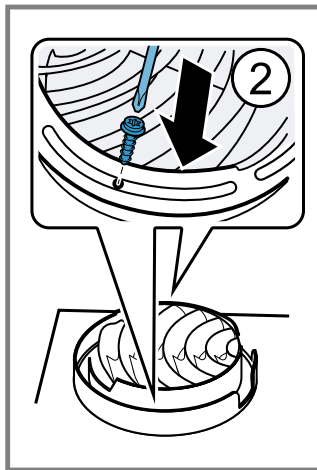


4

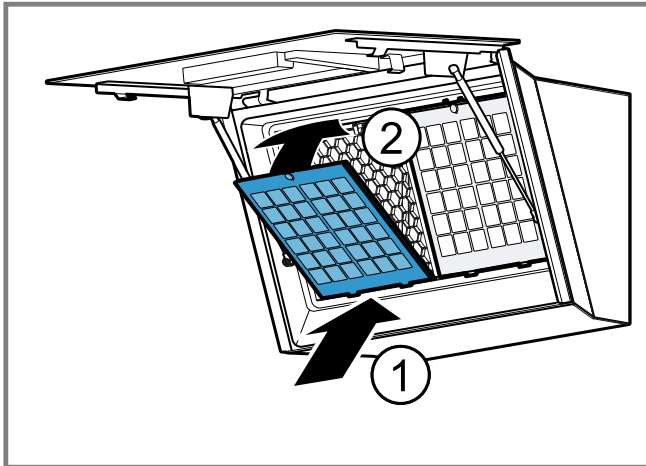




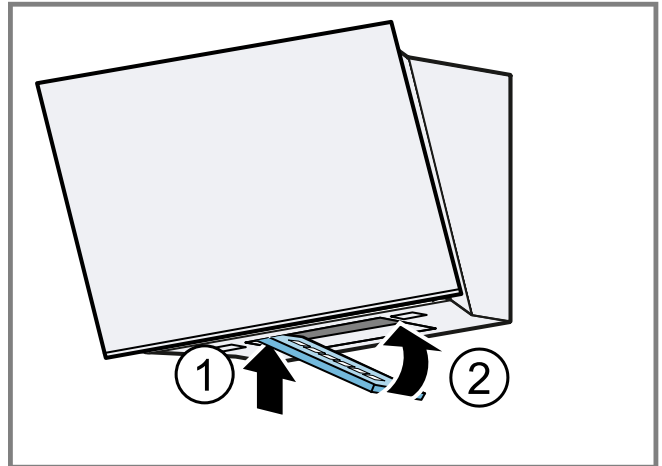
5



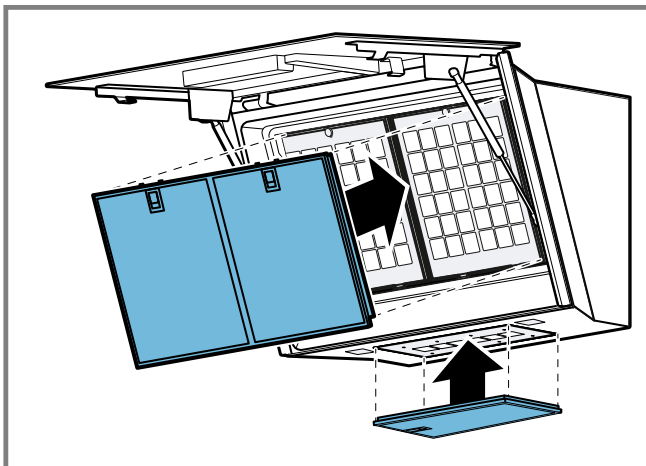
6



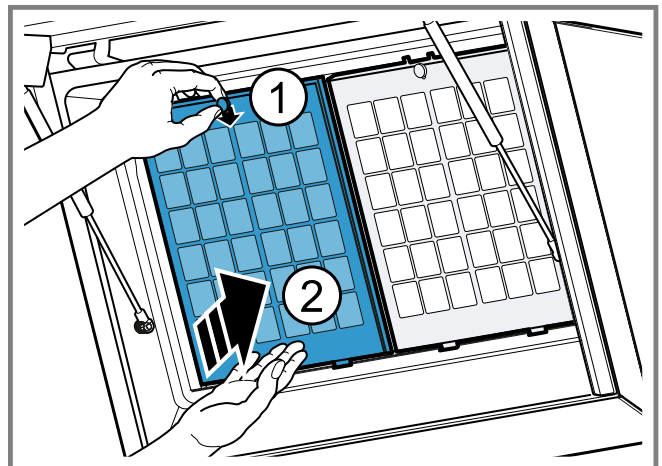
7



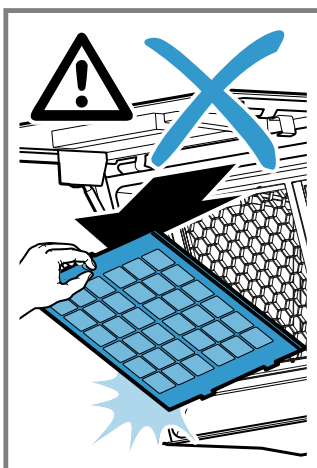
8



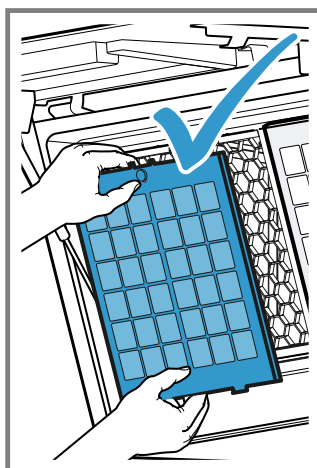
9



10



11



en

General information

- Read this instruction manual carefully.
- Keep the instruction manual and the product information safe for future reference or for the next owner.
- The appliance can only be used safely if it is correctly installed according to the safety instructions. The installer is responsible for ensuring that the appliance works perfectly at its installation location.
- This instruction manual is intended for the installer of the optional accessory.
- Only a licensed expert may connect the appliance.
- Switch off the power supply before carrying out any work.

This accessory can be used by persons with reduced physical, sensory or mental capabilities or a lack of experience and/or knowledge if they have been given supervision or instruction concerning use of the accessory in a safe way and if they understand the hazards involved.

Safe installation

Observe the safety instructions when installing the optional accessory.

WARNING – Risk of suffocation!

Children may put packaging material over their heads or wrap themselves up in it and suffocate.

- Keep packaging material away from children.
- Do not let children play with packaging material.

WARNING – Risk of injury!

Components inside the appliance may have sharp edges.

- Wear protective gloves.

The odour filter remains hot for quite some time after it has been regenerated.

- Do not touch the odour filter straight after it has been regenerated – allow it to cool down.

Included with the appliance

After unpacking all parts, check for any damage in transit and completeness of the delivery.

→ Fig. 1

Regenerable odour filter

Odour filters bind odorous substances in circulating-air mode. Regularly replaced or regenerated odour filters guarantee a high level of odour removal.

With normal use (daily for approx. one hour), replace the odour filter at least every 10 years.

The regenerable odour filter can be regenerated in a standard oven.

With normal use (approx. 1 hour a day), the regenerable odour filter must be replaced or regenerated every 12 months. The regenerable odour filter can be regenerated up to x times.

Regenerating the odour filter

WARNING – Risk of fire!

The oven cleaning function (pyrolytic self-clean) may cause a regenerable odour filter to catch fire.

- Never regenerate a regenerable odour filter with the oven cleaning function (pyrolytic self-clean).


WARNING – Risk of injury!


The odour filter remains hot for quite some time after it has been regenerated.

- Do not touch the odour filter straight after it has been regenerated – allow it to cool down.

Note: During the regeneration process, parts of the odour filter may become discoloured. This discolouration has no effect on the performance of the odour filter.

Requirement: The odour filter is removed.

1. Preheat the oven to a maximum of 200 °C (air recirculation .
2. To ensure that you do not scratch the baking tray, place the odour filter on a wire rack.
3. During regeneration, an odour may develop. Open a window to ensure that the room is well ventilated.
4. Regenerate the regenerative odour filter with the following settings.

Duration	Temperature	Type of heating
120 mins	Max. 200 °C	Air recirculation 

5. Leave the hot odour filter to cool down on a heat-resistant surface.

Installing the circulating-air guide A

1. Push the air recirculation deflector onto the air-pipe connector until the air recirculation deflector audibly engages.

2. To change the air circulation, turn the air recirculation deflector clockwise or anti-clockwise.
→ Fig. 2
3. Wind up the cable on the air recirculation deflector.
→ Fig. 3

Installing the circulating-air guide B

1. Place the air recirculation deflector evenly on the air connecting piece.
2. To change the air circulation, turn the air recirculation deflector clockwise or anti-clockwise.
→ Fig. 4
3. Screw the air recirculation deflector in tightly.
→ Fig. 5
4. Wind up the cable on the air recirculation deflector.
→ Fig. 6

Installing the odour filter

1. Open the glass plate.
2. Open the filter cover at the bottom of the appliance.
3. Position the large odour filters at the bottom and swing them up .
→ Fig. 7
4. Position the small odour filter on the left and swing it up .
→ Fig. 8
5. Insert the grease filters.
→ Fig. 9
You can find information about installing the grease filters in the operating instructions for your appliance.
6. Close the filter cover at the bottom of the appliance.
7. Close the glass plate.

Removing the odour filter

1. Open the glass plate.
2. Remove the grease filters.
You can find information about removing the grease filters in the operating instructions for your appliance.
3. **ATTENTION!** The odour filters are equipped with a safety catch. If you pull on the filters, you may damage the appliance.
► Do not pull on the filters.
Use one hand to hold the odour filter at the top and release it.
4. **Note:** Be aware that the odour filter is heavy.
Use your other hand to slightly press down on the odour filter.
→ Fig. 10
Hold the odour filter with both hands.
✓ The odour filter comes loose.
5. Remove the odour filter.
→ Fig. 11