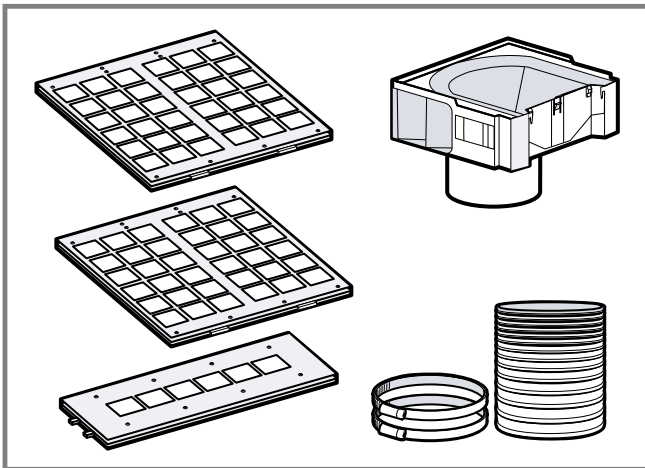
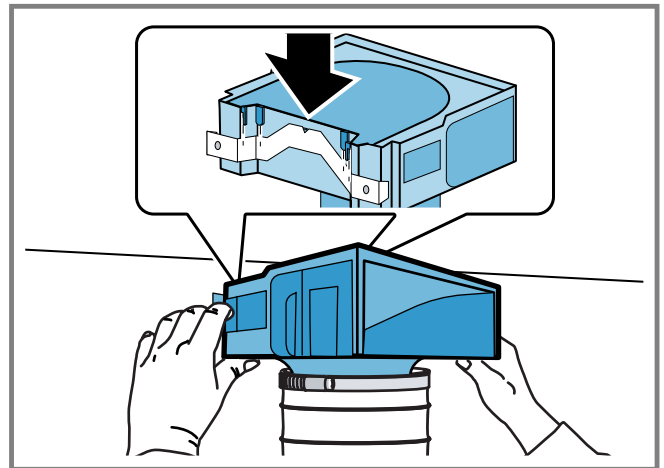




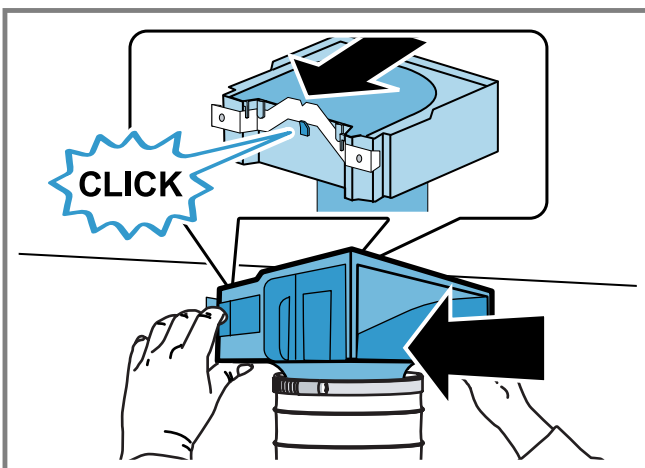
## en Installation instructions



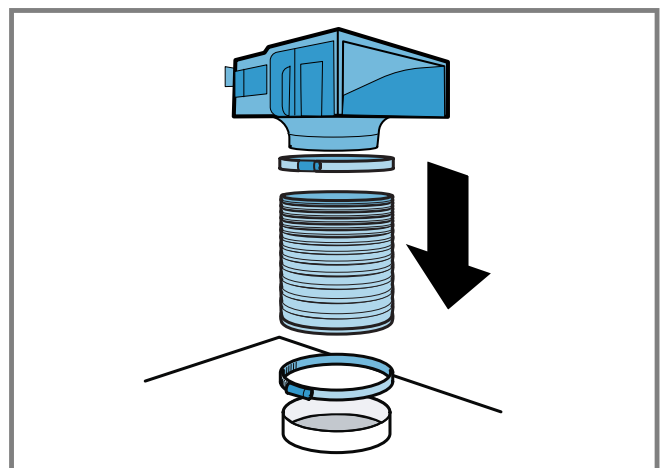
1



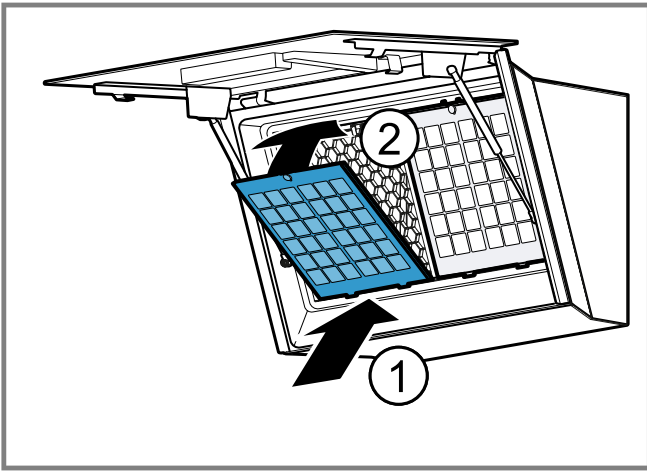
2



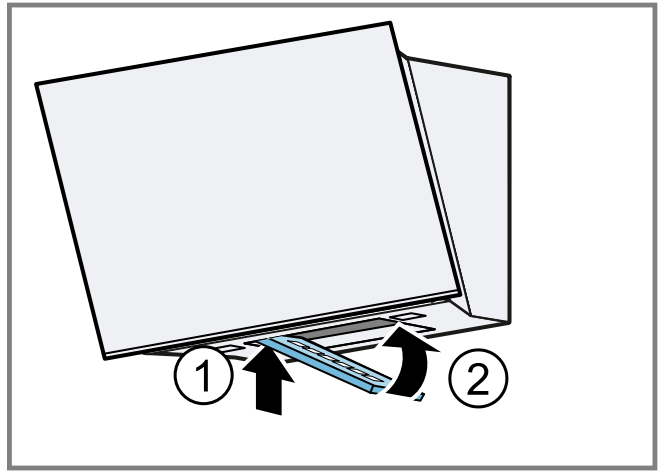
3



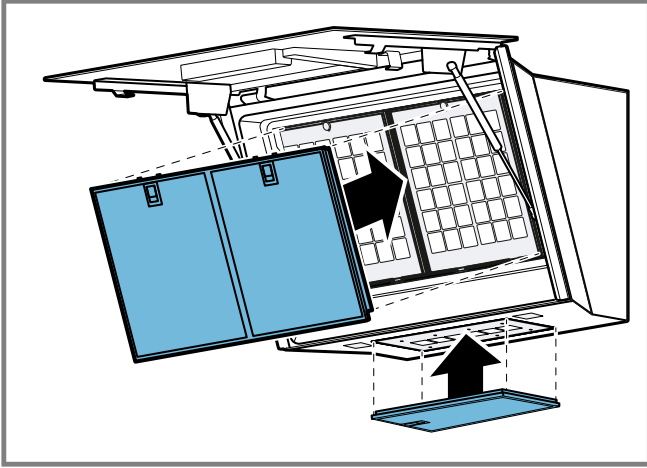
4



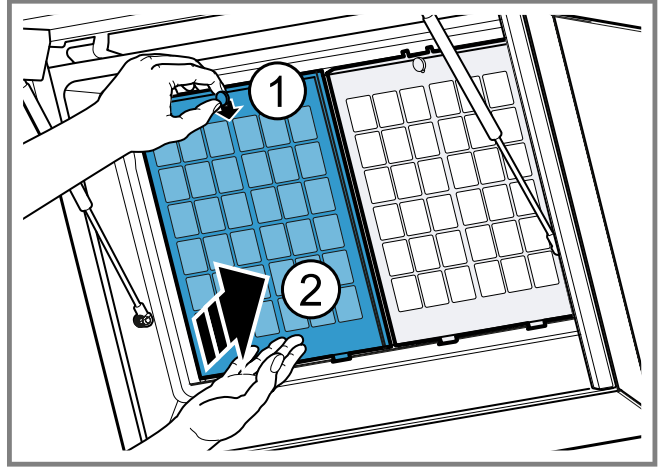
5



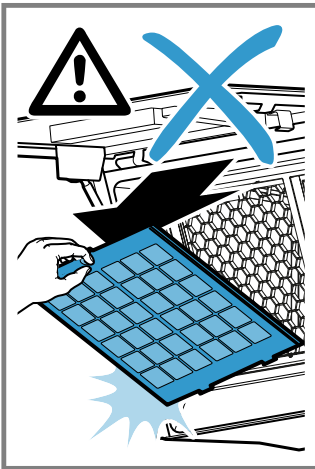
6



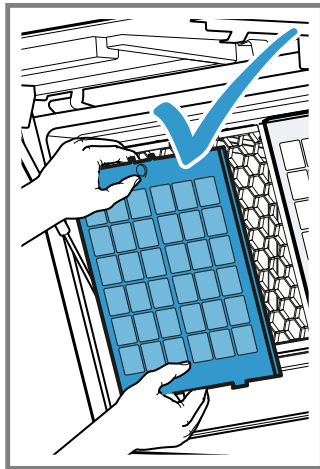
7



8



9



## General information

- Read this instruction manual carefully.
- Keep the instruction manual and the product information safe for future reference or for the next owner.
- The appliance can only be used safely if it is correctly installed according to the safety instructions. The installer is responsible for ensuring that the appliance works perfectly at its installation location.
- This instruction manual is intended for the installer of the optional accessory.
- Only a licensed expert may connect the appliance.
- Switch off the power supply before carrying out any work.

### Safe installation

Observe the safety instructions when installing the optional accessory.

#### **WARNING – Risk of suffocation!**

Children may put packaging material over their heads or wrap themselves up in it and suffocate.

- ▶ Keep packaging material away from children.
- ▶ Do not let children play with packaging material.

#### **WARNING – Risk of injury!**

Components inside the appliance may have sharp edges.

- ▶ Wear protective gloves.

The odour filter remains hot for quite some time after it has been regenerated.

- ▶ Do not touch the odour filter straight after it has been regenerated – allow it to cool down.

#### **WARNING – Risk of fire!**

A non-regenerable odour filter may catch fire in the oven.

- ▶ Only regenerable odour filters that can be regenerated.

#### **ATTENTION!**

If a regenerable odour filter falls, it may become damaged. The damage is not always visible from the outside.

- ▶ Dispose of and replace any regenerable odour filters that have fallen.

### Included with the appliance

After unpacking all parts, check for any damage in transit and completeness of the delivery.

→ Fig. 1

### Fitting the air recirculation deflector

1. Remove the flue duct.

You can find information on how to remove the flue duct in the installation instructions for your appliance.

2. Fit the circulating-air guide into the angle brackets.  
→ Fig. 2, → Fig. 3

3. Use the 2 hose clips to secure the hose to the circulating-air guide and the air-pipe connector.  
→ Fig. 4

4. Tighten and, if required, shorten the hose.

5. Fit the flue duct.

The slots on the inner flue duct section point upwards.

You can find information about the installation of the flue duct in the installation instructions for your appliance.

### Regenerable odour filter

Odour filters bind odorous substances in circulating-air mode. Regularly replaced or regenerated odour filters guarantee a high level of odour removal.

With normal use (daily for approx. one hour), replace the odour filter at least every 10 years.

The regenerable odour filter can be regenerated in a standard oven.

With normal use (approx. 1 hour a day), the regenerable odour filter must be replaced or regenerated every 3-4 months. The regenerable odour filter can be regenerated up to 30 times.

### Cleaning the odour filter

#### **ATTENTION!**

Incorrect cleaning damages the regenerative odour filter.

- ▶ Observe the regeneration instructions.
- ▶ Never clean a regenerative odour filter with cleaning products, water, in the dishwasher or with a wet cloth.
- ▶ If the regenerative odour filters are visibly soiled, remove the dirt with a damp cloth before starting the regeneration process.

Ensure that the odour filter does not get wet.

### Regenerating the odour filter

#### **WARNING – Risk of fire!**

The oven cleaning function (pyrolytic self-clean) may cause a regenerable odour filter to catch fire.

- ▶ Never regenerate a regenerable odour filter with the oven cleaning function (pyrolytic self-clean).


#### **WARNING – Risk of injury!**


The odour filter remains hot for quite some time after it has been regenerated.

- ▶ Do not touch the odour filter straight after it has been regenerated – allow it to cool down.

**Note:** During the regeneration process, parts of the odour filter may become discoloured. This discolouration has no effect on the performance of the odour filter.

**Requirement:** The odour filter is removed.

1. Preheat the oven to a maximum of 200 °C (air recirculation .
2. To ensure that you do not scratch the baking tray, place the odour filter on a wire rack.
3. During regeneration, an odour may develop. Open a window to ensure that the room is well ventilated.
4. Regenerate the regenerative odour filter with the following settings.

Duration	Temperature	Type of heating
120 mins	Max. 200 °C	Air recirculation 

5. Leave the hot odour filter to cool down on a heat-resistant surface.

### Installing the odour filter

1. Open the glass plate.
2. Open the filter cover at the bottom of the appliance.

3. Position the large odour filters at the bottom ① and swing them up ②.  
→ Fig. 5
4. Position the small odour filter on the left ① and swing it up ②.  
→ Fig. 6
5. Insert the grease filters.  
→ Fig. 7  
You can find information about installing the grease filters in the operating instructions for your appliance.
6. Close the filter cover at the bottom of the appliance.
7. Close the glass plate.

## Removing the odour filter

1. Open the glass plate.
2. Remove the grease filters.  
You can find information about removing the grease filters in the operating instructions for your appliance.
3. **ATTENTION!** The odour filters are equipped with a safety catch. If you pull on the filters, you may damage the appliance.
  - ▶ Do not pull on the filters.  
Use one hand to hold the odour filter at the top and release it.①
4. **Note:** Be aware that the odour filter is heavy.  
Use your other hand to slightly press down on the odour filter.②  
→ Fig. 8  
Hold the odour filter with both hands.
  - ✓ The odour filter comes loose.
5. Remove the odour filter.  
→ Fig. 9