



BOSCH



Register your
new device on
MyBosch now and
get free benefits:
**[bosch-home.com/
welcome](https://www.bosch-home.com/welcome)**

Grain Mill

MUZ5GM1

[en] User manual

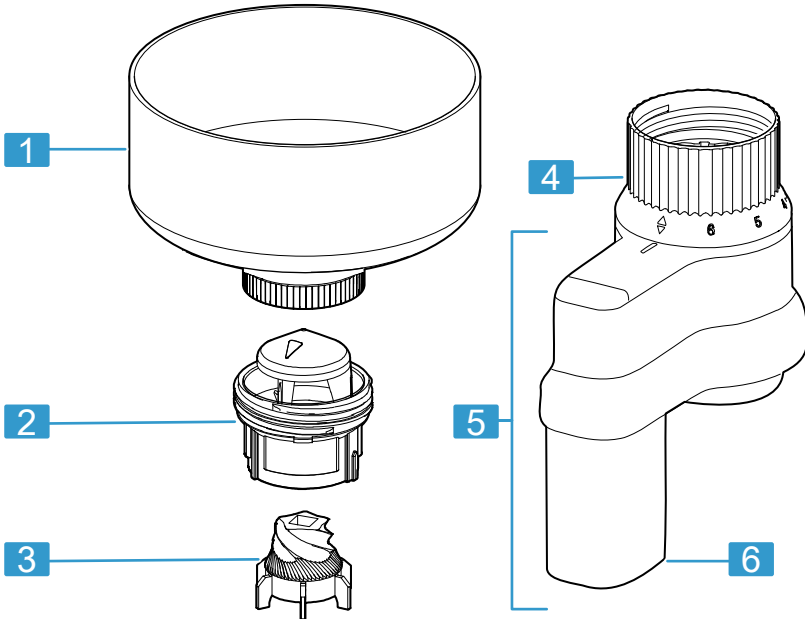
Grinding mill



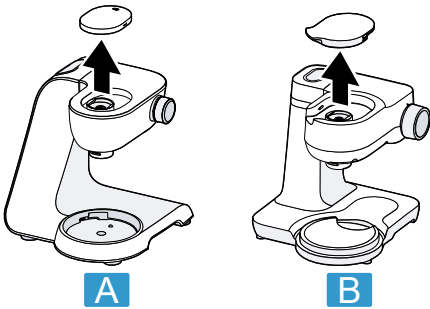
<https://digitalguide.bsh-group.com?mat-no=8001226070>



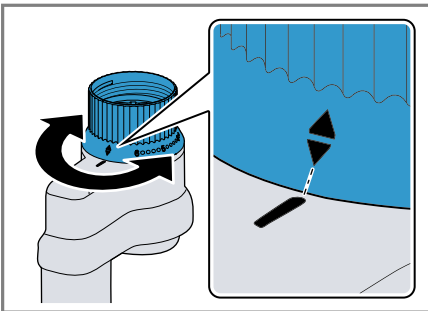
[en] Scan the QR code or visit the website to open the Further Notices for Use. You can find additional information about your appliance or accessory here.



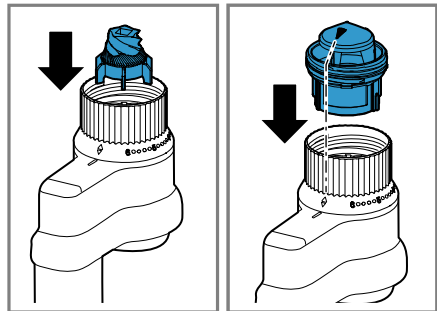
1



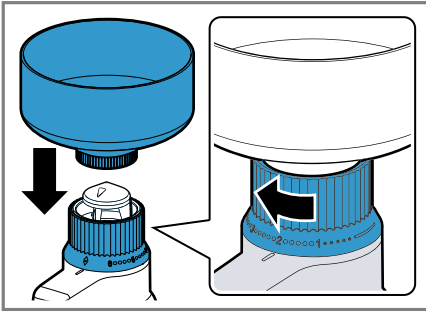
2



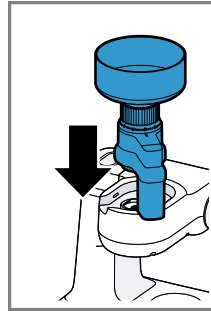
3



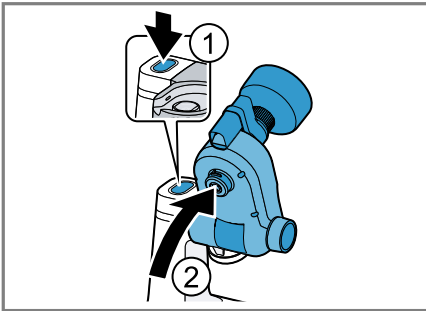
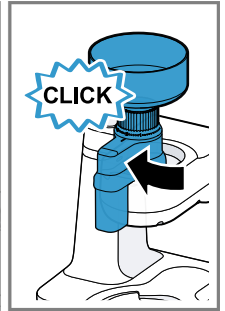
4



5



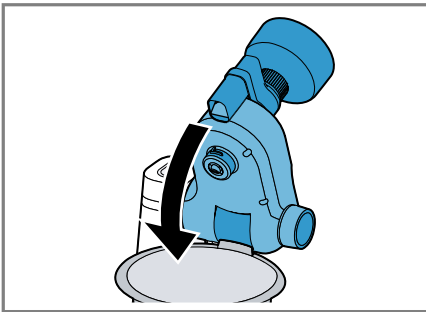
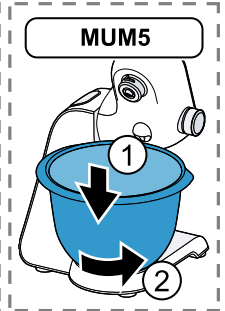
6



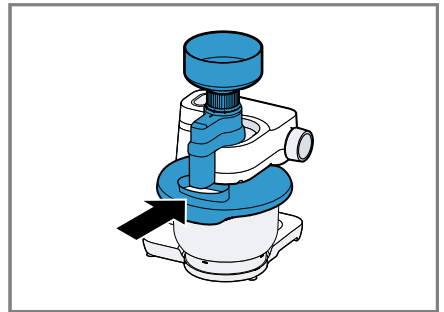
7



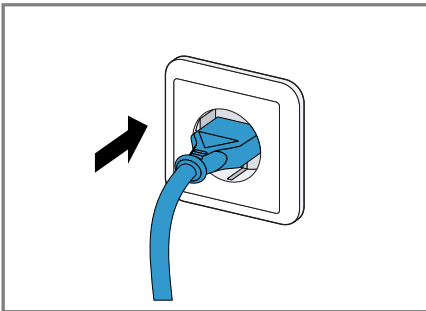
8



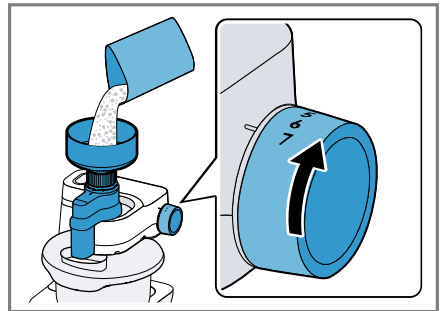
9



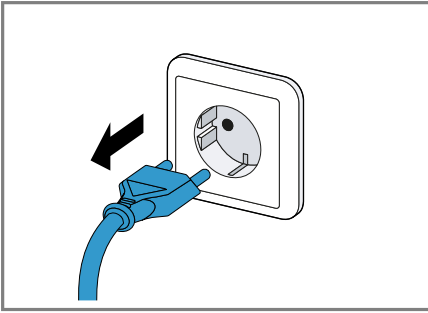
10



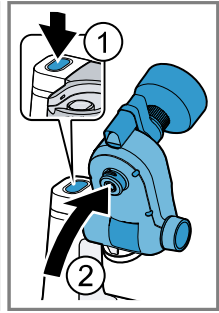
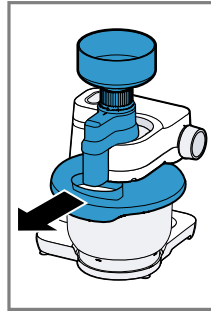
11



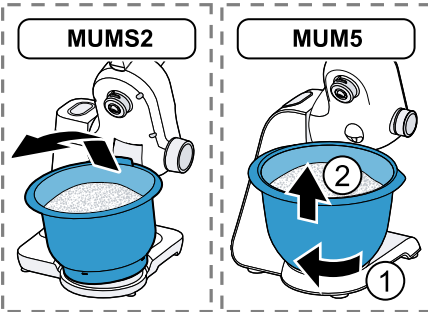
12



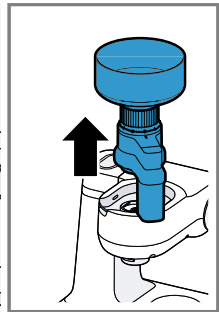
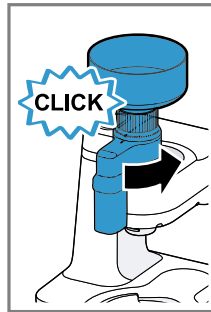
13



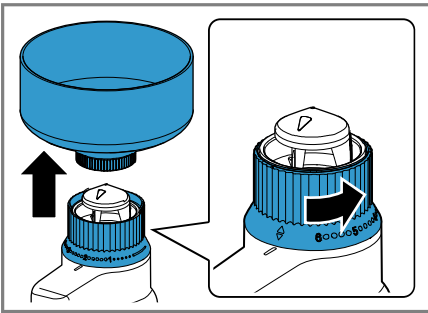
14



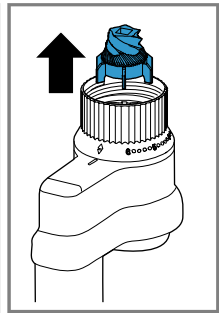
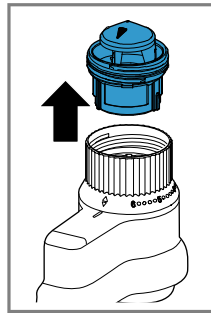
15










16



17



18

| |  |  |  |  |  |
|---|--|--|--|--|---|
|  | ✓ | ✓ | ✓ | ✓ | ✓ |
|  | ✓ | ✗ | ✗ | ✗ | ✗ |

Safety

- Read this instruction manual carefully.
- Observe the instructions for the base unit.

Only use the accessories:

- with a kitchen machine from the same series MUMS2, MUMS4, MUM5.
- With genuine parts and accessories.
- for grinding wheat, rye, buckwheat, husk-free barley, husk-free oats, millet, spelt and rice.
- ▶ Do not reach into the filling shaft.
- ▶ Never assemble the accessories on the base unit.
- ▶ Only attach and remove accessories once the drive has stopped and the appliance has been unplugged.
- ▶ The accessories should only be used in the intended operating position.

Avoiding material damage

- ▶ Do not insert objects into the filling shaft or housing, e.g. wooden spoons.
- ▶ Never use the appliance to grind corn, poppy seeds, soya beans or coffee beans.
- ▶ Never operate the appliance at no-load.

Overview

→ Fig. 1

| | |
|----------|---------------------------|
| 1 | Filling container |
| 3 | Grinding cone |
| 4 | Setting ring |
| 5 | Housing with setting ring |
| 6 | Discharge chute |

Overview of base units

This accessory can be used with different base units.

You can prepare your kitchen machine as shown.

→ Fig. 2

| | |
|----------|---|
| A | Kitchen machine from the MUMS4 or MUM5 series |
|----------|---|

| | |
|----------|---------------------------------------|
| B | Kitchen machine from the MUMS2 series |
|----------|---------------------------------------|

Using the accessories

Follow the illustrated instructions.

Assembling the accessory

→ Fig. 3 - 5

Attaching the accessory to the base unit

→ Fig. 6 - 10

Grinding grain

→ Fig. 11 - 12

After using the appliance

→ Fig. 13 - 18

Cleaning the appliance and parts

Clean the individual parts as indicated in the table.

→ Fig. 19 - 19

Troubleshooting

The grain mill is not working.

The grain mill is not assembled correctly.

- ▶ Check whether the grain mill has been assembled correctly.

An installed predetermined breaking point protects the drive from damage. The agitator paddle on the underside of the housing will break at the predetermined breaking point if there are foreign objects in the grinder or if damp grain is ground.

- ▶ To replace the agitator paddle, re-order from customer service quoting order number 10018359.

The grinding result is not how you want.

The setting ring is not set to the grinding level required.

- ▶ Set the grinding level required by turning the setting ring.



Thank you for buying a Bosch Home Appliance!

Register your new device on MyBosch now and profit directly from:

- **Expert tips & tricks for your appliance**
- **Warranty extension options**
- **Discounts for accessories & spare-parts**
- **Digital manual and all appliance data at hand**
- **Easy access to Bosch Home Appliances Service**

Free and easy registration – also on mobile phones:

www.bosch-home.com/welcome

BOSCH
HOME APPLIANCES
SERVICE

Looking for help? You'll find it here.

Expert advice for your Bosch home appliances, help with problems or a repair from Bosch experts.

Find out everything about the many ways Bosch can support you:

www.bosch-home.com/service

Contact data of all countries are listed in the attached service directory.

BSH Hausgeräte GmbH

Carl-Wery-Straße 34
81739 München, GERMANY
www.bosch-home.com

A Bosch Company



8001258766 (020603)

de, en, fr, it, nl, da, no, sv, fi, es, pt, el, tr, pl, uk, ru, ar

Valid within Great Britain:
Imported to Great Britain by
BSH Home Appliances Ltd.
Grand Union House
Old Wolverton Road
Wolverton, Milton Keynes
MK12 5PT
United Kingdom