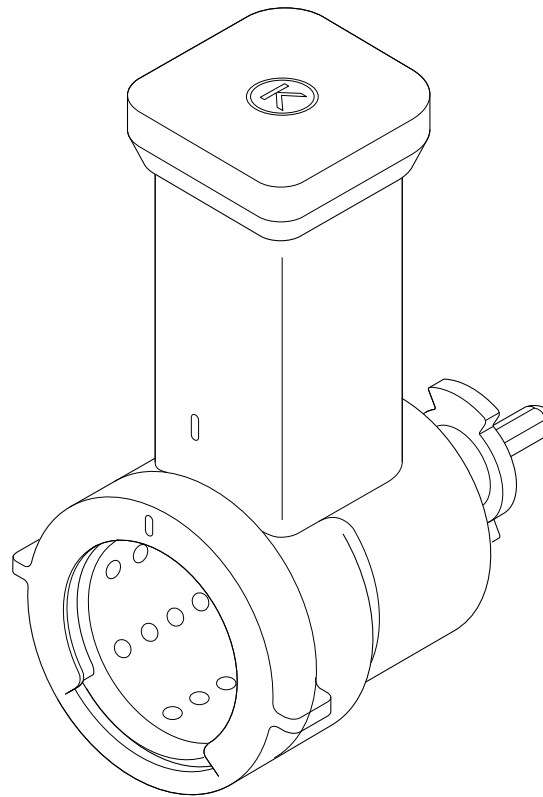


# KENWOOD

English

KAX643ME

instructions



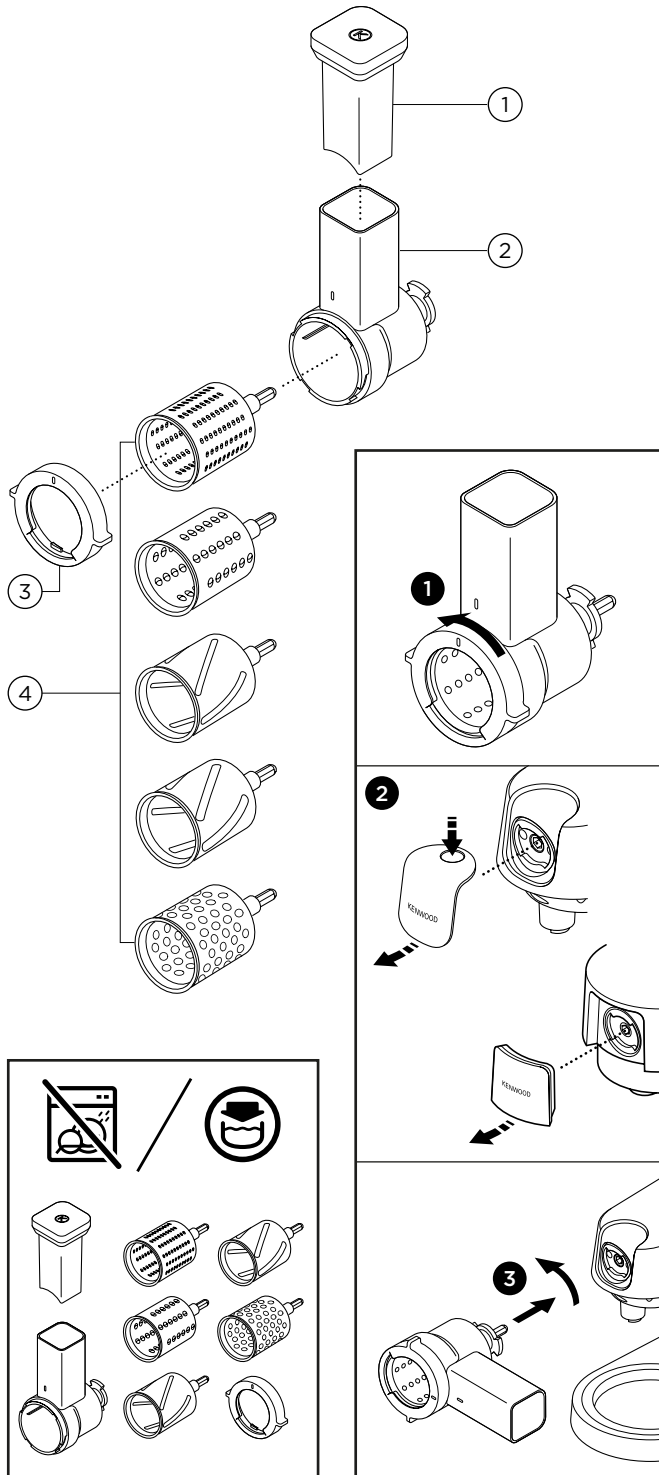
**Kenwood Ltd**

New Lane  
Havant  
Hampshire  
PO9 2NH

[kenwoodworld.com](http://kenwoodworld.com)

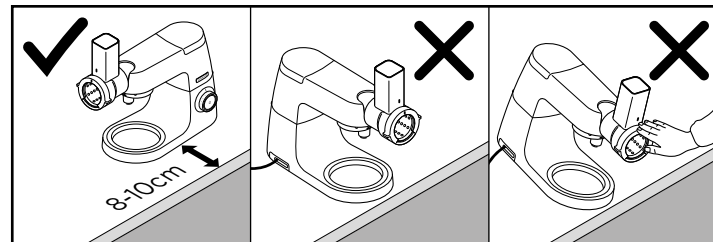


# English




## safety


- Read these instructions carefully and retain for future reference.
- Remove all packaging and any labels.
- Switch off and unplug:
  - before fitting or removing parts;
  - when not in use;
  - before cleaning.
- Never leave the appliance unattended when it is operating.
- Never put your fingers in the feed tube. Only use the pusher supplied with the roto food cutter attachment.
- Do not use excessive force to push the food down the feed tube - you could damage your attachment.
- Handle the drums with care, they are extremely sharp.
- Do not touch moving parts.
- Misuse of your attachment can result in injury.
- Do not operate your appliance near the edge, or overhanging the work surface or apply force to the attachment when fitted, as this may cause the unit to become unstable and tip over, which may result in injury.




- Do not move or raise the mixer head with an attachment fitted as the Stand Mixer could become unstable.
- Refer to your main Stand Mixer instruction book for additional safety warnings.

This KAX643ME attachment features the Twist Connection System  and is designed to fit directly on the latest generation Kenwood Chef models (identified as TYPE KVC, KVL, KCC, KWL and KCL).

This attachment can also fit Kmix Stand Mixers featuring a slow speed attachment outlet (TYPE KMX).

To check that this attachment is compatible with your Stand Mixer you will need to ensure both components feature the Twist Connection System .

If your Stand Mixer features the Bar Connection System  you will also need an adaptor before operation is possible. The reference code for the adaptor is KAT001ME. For more information and how to order the adaptor visit [www.kenwoodworld.com/twist](http://www.kenwoodworld.com/twist).

Use the roto food cutter to slice and shred such foods as carrot, cucumber, cabbage, apples, potato and cheese.

#### before using for the first time

- 1 Wash the parts: see 'Cleaning'.

#### key

- ① pusher
- ② feed tube and body
- ③ drum retainer
- ④ drums

## to assemble your roto food cutter

### assembly

- 1 Select a drum. The drums are numbered at the back and used as follows:
  - **Drum No 1** - For fine shredding :- chocolate, nuts, carrot and cheese.
  - **Drum No 2** - For coarse shredding :- chocolate, nuts, carrot and cheese.
  - **Drum No 3** - For thin slicing :- onion, cabbage, cucumber, carrot, apples, potato and chocolate.
  - **Drum No 4** - For thick slicing :- onion, cabbage, cucumber, carrot, apples, potato, chocolate and beetroot.
  - **Drum No 5 (Rasping drum)** - For grating parmesan cheese and potato for German potato dumplings.
- 2 Fit the drum into the body of the roto food cutter.
- 3 Lock the drum retainer in position by turning anti-clockwise until the locating line is directly underneath the line on the body ①.

## to use your roto food cutter

- 1 Lift off the slow speed outlet cover ②.
- 2 With the attachment in the position shown, locate to the slow speed outlet and rotate to lock in place ③.
- 3 Place a collecting vessel beneath the outlet.

- 4 Fill the feed tube to prevent food from slipping sideways during processing. Switch onto speed 3 - 4 and gently push down with the pusher. Note: The pusher will only fit one way.
- When slicing cabbage, cut into wedges and remove the stalk. Place in the feed tube and keep upright with steady pressure on the pusher.

## cleaning

- Always switch off and unplug before removing the attachment from the Stand Mixer.
- Dismantle the attachment fully before cleaning.
- For easier cleaning always wash the parts immediately after use.
- Wash all parts in hot soapy water, then dry. **Do not wash in a dishwasher.**

## service and customer care

### **UK only**

If you need help with:

- using your attachment
- servicing or repairs (in or out of guarantee)

☎ call Kenwood customer care on **0345 222 0458. Have your model number (KAX643ME) and date code (e.g. 20B08) ready.** They are on the attachment outer carton.

### ● **spares and attachments**

☎ call 0844 557 3653.

### **other countries**

- If you experience any problems with the operation of your attachment, before requesting assistance visit [www.kenwoodworld.com](http://www.kenwoodworld.com).
- Please note that your product is covered by a warranty, which complies with all legal provisions concerning any existing warranty and consumer rights in the country where the product was purchased.

- If your Kenwood product malfunctions or you find any defects, please send it or bring it to an authorised KENWOOD Service Centre. To find up to date details of your nearest authorised KENWOOD Service centre visit [www.kenwoodworld.com](http://www.kenwoodworld.com) or the website specific to your Country.
- Designed and engineered by Kenwood in the UK.
- Made in China.