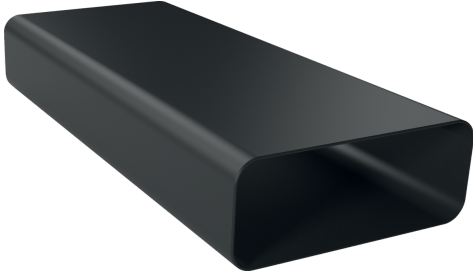


Flat duct HEZ9VDSM1



- Straight flat-duct tube element (500mm, male)
- Aerodynamically optimized for minimised pressure losses and maximised flow rate. Easy-to-cut & easy-to-connect via the female connector sleeve element.
- The element complies with the Needle Flame Test (according to IEC 60695-5-11), the V2 flammability class (according to UL94) and the B1 building material class (DIN 4102-1).

Dimensions of the packed product (HxWxD): 98 x 235 x 530 mm
Pallet dimensions: 175.0 x 80.0 x 120.0
Standard number of units per pallet: 96
Net weight: 0.8 kg
Gross weight: 1.0 kg
EAN code: 4242005253814



**Flat duct
HEZ9VDSM1**

measurements in mm

