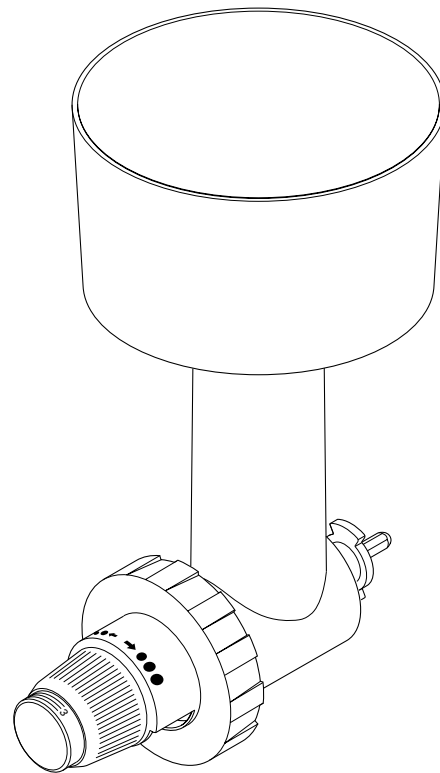


KENWOOD

English

KAX941PL

instructions



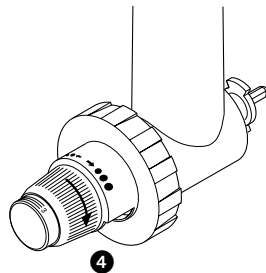
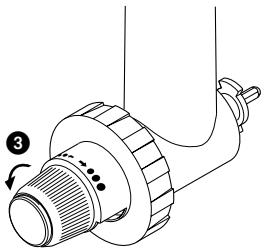
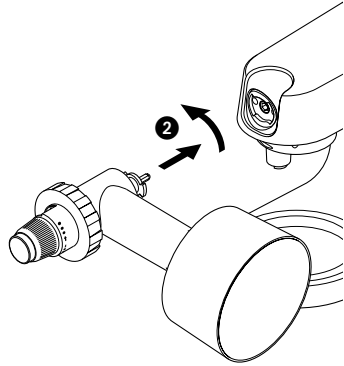
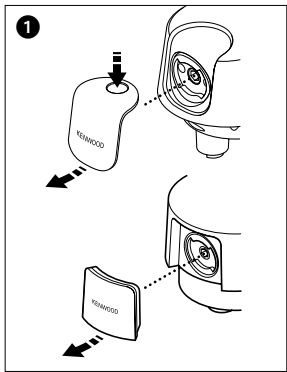
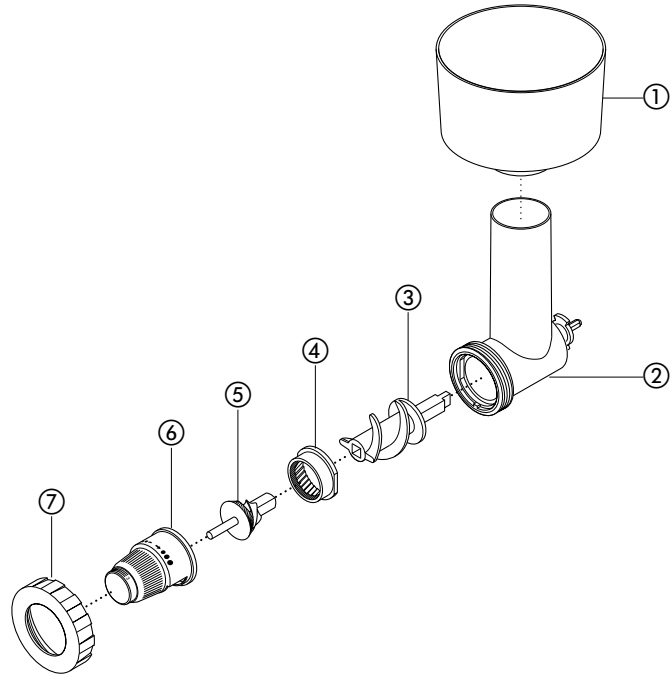
Kenwood Ltd

New Lane
Havant
Hampshire
PO9 2NH

kenwoodworld.com

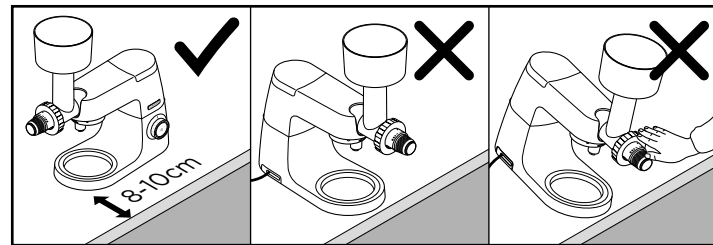


English



safety

- Read these instructions carefully and retain for future reference.
- Remove all packaging and any labels.
- Switch off and unplug:
 - before fitting or removing parts;
 - when not in use;
 - before cleaning.
- Never leave the appliance unattended when it is operating.
- Do not place your fingers or any other item down the feed tube.
- Keep fingers away from moving parts.
- Never attach or remove the grainmill whilst the Stand Mixer is in operation.
- Never assemble or dismantle the attachment on the Stand Mixer.
- Misuse of your attachment can result in injury.
- Do not operate your appliance near the edge, or overhanging the work surface or apply force to the attachment when fitted, as this may cause the unit to become unstable and tip over, which may result in injury.



- Do not move or raise the mixer head with an attachment fitted as the Stand Mixer could become unstable.

Cleaning


- Before removing your grainmill from the Stand Mixer, switch off and unplug.
- Remove the grainmill from the slow speed outlet and dismantle.

adjusting control, milling ring and cone


- These components should be cleaned with a dry coarse brush. Do not immerse in water.


all other parts

- Wash in hot soapy water and dry thoroughly.
- Do not place the parts in the dishwasher.
- Refer to your main Stand Mixer instruction book for additional safety warnings.

This KAX941PL attachment features the Twist Connection System  and is designed to fit directly on the latest generation Kenwood Chef models (identified as TYPE KVC, KVL, KCC, KWL and KCL).

This attachment can also fit Kmix Stand Mixers featuring a slow speed attachment outlet (TYPE KMX).

To check that this attachment is compatible with your Stand Mixer you will need to ensure both components feature the Twist Connection System .

If your Stand Mixer features the Bar Connection System  you will also need an adaptor before operation is possible. The reference code for the adaptor is KAT001ME. For more information and how to order the adaptor visit www.kenwoodworld.com/twist.

Use the grainmill to mill a range of cereals including wheat, rye, buckwheat, husked barley, millet and rice. Oats can also be ground but a coarse setting should be selected.

All the cereals must be dry otherwise the mill will clog.

before using for the first time

- Wash the parts see 'care and cleaning'

key

- ① hopper
- ② grainmill body
- ③ scroll
- ④ milling ring
- ⑤ milling cone
- ⑥ adjusting control
- ⑦ ring nut

to assemble

- 1 Insert the scroll into the grainmill body.
- 2 Add the milling ring ensuring that it locates in its recess.
- 3 Fix the milling cone in position.
- 4 Add the adjusting control, ensuring that the slot fits into the locating peg at the bottom of the grainmill body.
- 5 Place the ring nut in position and tighten by turning clockwise.
- 6 Fit the hopper.

to use the grainmill

Assembling and locating the grainmill onto the Stand Mixer is easier if the fine setting has been selected on the grainmill.

- 1 Lift off the slow speed outlet cover **1**.
- 2 With the attachment in the position shown, locate to the slow speed outlet and rotate to lock in place **2**.
- 3 Fill the hopper with grains, a maximum 750g – 1 Kg can be accommodated depending upon the cereal.
- 4 Select the desired grain size by turning the adjusting control to the left **3** (anticlockwise) for a finer result and to the right **4** (clockwise) for a coarser result.

important

Never turn the adjusting control passed the “stop” line.

- 5 Once the desired setting is selected, switch the Stand Mixer to maximum speed ensuring that there is a collecting vessel below the outlet.

- Please note that your product is covered by a warranty, which complies with all legal provisions concerning any existing warranty and consumer rights in the country where the product was purchased.
- If your Kenwood product malfunctions or you find any defects, please send it or bring it to an authorised KENWOOD Service Centre. To find up to date details of your nearest authorised KENWOOD Service centre visit www.kenwoodworld.com or the website specific to your Country.

service and customer care

UK only

If you need help with:

- using your attachment
- servicing or repairs (in or out of guarantee)

☎ call Kenwood customer care on **0345 222 0458. Have your model number (KAX941PL) and date code (e.g. 20B08) ready.** They are on the attachment outer carton.

● **spares and attachments**

☎ call 0844 557 3653.

other countries

- If you experience any problems with the operation of your attachment, before requesting assistance visit www.kenwoodworld.com.